



**ONE** FIRM  
WORLDWIDE®

## Women's Affinity Group: Office Leaders



**IRENE H. VERMEEREN-KEIJZERS**

Partner, Amsterdam  
Labor & Employment  
[ivermeeren@jonesday.com](mailto:ivermeeren@jonesday.com)  
+31.20.305.4251



**FERRELL M. KEEL**

Partner, Dallas  
Financial Markets  
[fkeel@jonesday.com](mailto:fkeel@jonesday.com)  
+1.214.969.4851



**DARCY R. WHITE**

Partner, Atlanta  
M&A  
[darcywhite@jonesday.com](mailto:darcywhite@jonesday.com)  
+1.404.581.8617



**EMILY J. TAIT**

Partner, Detroit  
Intellectual Property  
[etait@jonesday.com](mailto:etait@jonesday.com)  
+1.313.230.7920



**LISA TALIADOROS**

Partner-in-Charge, Melbourne  
Intellectual Property  
[ltaliadoros@jonesday.com](mailto:ltaliadoros@jonesday.com)  
+61.3.9101.6821



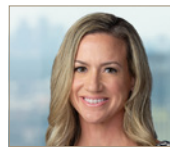
**AMY KLÄSENER**

Partner, Frankfurt  
Global Disputes  
[aklaesener@jonesday.com](mailto:aklaesener@jonesday.com)  
+49.69.9726.3939



**YVONNE W. CHAN**

Partner, Boston  
Business & Tort Litigation  
[ychan@jonesday.com](mailto:ychan@jonesday.com)  
+1.617.449.6914



**ANNA E. RAIMER**

Partner, Houston  
Intellectual Property  
[aeraimer@jonesday.com](mailto:aeraimer@jonesday.com)  
+1.832.239.3786



**CRISTIANA SPONTONI**

Practice Leader Health Care &  
Life Sciences, Brussels  
[cspontoni@jonesday.com](mailto:cspontoni@jonesday.com)  
+32.2.645.14.48



**ANN T. ROSSUM**

Partner, Irvine  
Business & Tort Litigation  
[atrossum@jonesday.com](mailto:atrossum@jonesday.com)  
+1.949.553.7530



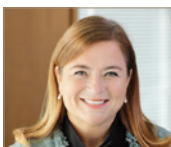
**IRENE SAVANIS FIORENTINOS**

Of Counsel, Chicago  
Business & Tort Litigation  
[iflorentinos@jonesday.com](mailto:iflorentinos@jonesday.com)  
+1.312.269.4155



**HANNAH ROSE**

Partner, London  
Private Equity  
[hrose@jonesday.com](mailto:hrose@jonesday.com)  
+44.20.7039.5267



**KIMBERLY J. PUSTULKA**

Partner, Cleveland  
Financial Markets  
[kjpustulka@jonesday.com](mailto:kjpustulka@jonesday.com)  
+1.216.586.7002



**ANNABEL TREADGOLD**

Partner, London  
Global Disputes  
[atreadgold@jonesday.com](mailto:atreadgold@jonesday.com)  
+44.20.7039.5214



**BRANDY HUTTON RANJAN**

Partner, Columbus  
Business & Tort Litigation  
[branjan@jonesday.com](mailto:branjan@jonesday.com)  
+1.614.281.3838



**SARAH G. CONWAY**

Partner, Los Angeles  
Business & Tort Litigation  
[sgconway@jonesday.com](mailto:sgconway@jonesday.com)  
+1.213.243.2567

# Women's Affinity Group: Office Leaders



## BLANCA PUYOL MARTÍNEZ-FERRANDO

Partner, Madrid  
M&A  
[bpuyol@jonesday.com](mailto:bpuyol@jonesday.com)  
+34.91.520.3930



## SILVIA MALAGÓN

Of Counsel, Mexico City  
Financial Markets  
[silviamalagon@jonesday.com](mailto:silviamalagon@jonesday.com)  
+52.55.3000.4011



## ERIKA WHYTE

Partner, Miami  
State Attorney General Enforcement,  
Investigations & Litigation  
[ewhyte@jonesday.com](mailto:ewhyte@jonesday.com)  
+1.305.714.9811



## CARLA CALCAGNILE

Of Counsel, Milan  
Tax  
[ccalcagnile@jonesday.com](mailto:ccalcagnile@jonesday.com)  
+39.02.7645.4001



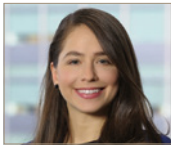
## FRANCESCA RAVALLESE

Partner, Milan  
M&A  
[fravallese@jonesday.com](mailto:fravallese@jonesday.com)  
+39.02.7645.4001



## KRISTIN BERGER PARKER

Partner, Minneapolis  
Labor & Employment  
[kparker@jonesday.com](mailto:kparker@jonesday.com)  
+1.612.217.8847



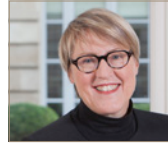
## REBEKAH E. BLAKE

Partner, New York  
Business & Tort Litigation  
[reblake@jonesday.com](mailto:reblake@jonesday.com)  
+1.212.326.3743



## KRISTINA A. YOST

Partner, New York  
Labor & Employment  
[kyost@jonesday.com](mailto:kyost@jonesday.com)  
+1.212.326.3816



## LINDA A. HESSE

Partner, Paris  
Financial Markets  
[lhesse@jonesday.com](mailto:lhesse@jonesday.com)  
+33.1.56.59.38.72



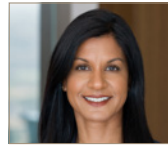
## EMMANUELLE RIVEZ-DOMONT

Partner, Paris  
Labor & Employment  
[earivez@jonesday.com](mailto:earivez@jonesday.com)  
+33.1.56.59.39.39



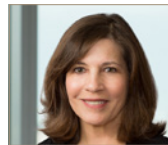
## KIMBERLY A. BROWN

Partner, Pittsburgh  
Business & Tort Litigation  
[kabrown@jonesday.com](mailto:kabrown@jonesday.com)  
+1.412.394.7995



## SHIREEN MATTHEWS

Partner, San Diego  
Investigations & White Collar Defense  
[shireenmatthews@jonesday.com](mailto:shireenmatthews@jonesday.com)  
+1.858.314.1184



## BARBARA GREGORATOS

Of Counsel, San Francisco  
Real Estate  
[bgregoratos@jonesday.com](mailto:bgregoratos@jonesday.com)  
+1.415.875.5830



## BING LIANG, Ph.D.

Partner, Silicon Valley  
Intellectual Property  
[bliang@jonesday.com](mailto:bliang@jonesday.com)  
+1.650.687.4168



## JENNIFER C. EVERETT

Partner, Washington  
Cybersecurity, Privacy & Data Protection  
[jeverett@jonesday.com](mailto:jeverett@jonesday.com)  
+1.202.879.5494

## ONE FIRM WORLDWIDE®

AMSTERDAM  
ATLANTA  
BEIJING  
BOSTON  
BRISBANE  
BRUSSELS  
CHICAGO

CLEVELAND  
COLUMBUS  
DALLAS  
DETROIT  
DUBAI  
DÜSSELDORF  
FRANKFURT

HONG KONG  
HOUSTON  
IRVINE  
LONDON  
LOS ANGELES  
MADRID  
MELBOURNE

MEXICO CITY  
MIAMI  
MILAN  
MINNEAPOLIS  
MUNICH  
NEW YORK  
PARIS

PERTH  
PITTSBURGH  
SAN DIEGO  
SAN FRANCISCO  
SÃO PAULO  
SHANGHAI  
SILICON VALLEY

SINGAPORE  
SYDNEY  
TAIPEI  
TOKYO  
WASHINGTON