



ONE FIRM  
WORLDWIDE®

## Women's Affinity Group: Office Leaders



### IRENE H. VERMEEREN-KEIJZERS

Partner, Amsterdam  
Labor & Employment  
[ivermeeren@jonesday.com](mailto:ivermeeren@jonesday.com)  
+31.20.305.4251



### DARCY R. WHITE

Partner, Atlanta  
M&A  
[darcywhite@jonesday.com](mailto:darcywhite@jonesday.com)  
+1.404.581.8617



### LISA TALIADOROS

Partner-in-Charge, Melbourne  
Intellectual Property  
[ltaliadoros@jonesday.com](mailto:ltaliadoros@jonesday.com)  
+61.3.9101.6821



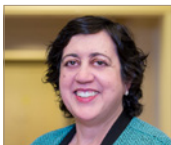
### YVONNE W. CHAN

Partner, Boston  
Business & Tort Litigation  
[ychan@jonesday.com](mailto:ychan@jonesday.com)  
+1.617.449.6914



### CRISTIANA SPONTONI

Practice Leader Health Care &  
Life Sciences, Brussels  
[cspontoni@jonesday.com](mailto:cspontoni@jonesday.com)  
+32.2.645.14.48



### IRENE SAVANIS FIORENTINOS

Of Counsel, Chicago  
Business & Tort Litigation  
[iflorentinos@jonesday.com](mailto:iflorentinos@jonesday.com)  
+1.312.269.4155



### DENISE A. CARKHUFF

Partner, Cleveland  
Private Equity  
[dcarkhuff@jonesday.com](mailto:dcarkhuff@jonesday.com)  
+1.216.586.1079



### KRISTIN S.M. MORRISON

Partner, Cleveland  
Business & Tort Litigation  
[kmorrison@jonesday.com](mailto:kmorrison@jonesday.com)  
+1.216.586.7375



### BRANDY HUTTON RANJAN

Partner, Columbus  
Business & Tort Litigation  
[branja@jonesday.com](mailto:branja@jonesday.com)  
+1.614.281.3838



### FERRELL M. KEEL

Partner, Dallas  
Financial Markets  
[fkeel@jonesday.com](mailto:fkeel@jonesday.com)  
+1.214.969.4851



### EMILY J. TAIT

Partner, Detroit  
Intellectual Property  
[etait@jonesday.com](mailto:etait@jonesday.com)  
+1.313.230.7920



### AMY KLÄSENER

Partner, Frankfurt  
Global Disputes  
[aklaesener@jonesday.com](mailto:aklaesener@jonesday.com)  
+49.69.9726.3939



### ANNA E. RAIMER

Partner, Houston  
Intellectual Property  
[aeraimer@jonesday.com](mailto:aeraimer@jonesday.com)  
+1.832.239.3786



### ANN T. ROSSUM

Partner, Irvine  
Business & Tort Litigation  
[atrossum@jonesday.com](mailto:atrossum@jonesday.com)  
+1.949.553.7530



### HANNAH ROSE

Partner, London  
Private Equity  
[hrose@jonesday.com](mailto:hrose@jonesday.com)  
+44.20.7039.5267



### ANNABEL TREADGOLD

Partner, London  
Global Disputes  
[atreadgold@jonesday.com](mailto:atreadgold@jonesday.com)  
+44.20.7039.5214

# Women's Affinity Group: Office Leaders



## KERRY C. FOWLER

Partner, Los Angeles  
Business & Tort Litigation  
[kcfowler@jonesday.com](mailto:kcfowler@jonesday.com)  
+1.213.243.2792



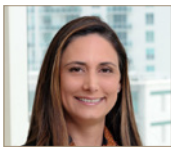
## BLANCA PUYOL MARTÍNEZ-FERRANDO

Of Counsel, Madrid  
M&A  
[bpuyol@jonesday.com](mailto:bpuyol@jonesday.com)  
+34.91.520.3930



## SILVIA MALAGÓN

Of Counsel, Mexico City  
Financial Markets  
[silviamalagon@jonesday.com](mailto:silviamalagon@jonesday.com)  
+52.55.3000.4011



## CRISTINA PÉREZ SOTO

Partner, Miami  
Investigations & White Collar Defense  
[cperezsoto@jonesday.com](mailto:cperezsoto@jonesday.com)  
+1.305.714.9733



## ERIKA WHYTE

Partner, Miami  
State Attorney General Enforcement,  
Investigations & Litigation  
[ewhyte@jonesday.com](mailto:ewhyte@jonesday.com)  
+1.305.714.9811



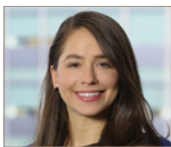
## CARLA CALCAGNILE

Of Counsel, Milan  
Tax  
[ccalcagnile@jonesday.com](mailto:ccalcagnile@jonesday.com)  
+39.02.7645.4001



## FRANCESCA RAVALLESE

Partner, Milan  
M&A  
[fravallese@jonesday.com](mailto:fravallese@jonesday.com)  
+39.02.7645.4001



## REBEKAH E. BLAKE

Partner, New York  
Business & Tort Litigation  
[reblake@jonesday.com](mailto:reblake@jonesday.com)  
+1.212.326.3743



## KRISTINA A. YOST

Partner, New York  
Labor & Employment  
[kyost@jonesday.com](mailto:kyost@jonesday.com)  
+1.212.326.3816



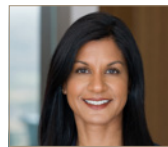
## LINDA A. HESSE

Partner, Paris  
Financial Markets  
[lhesse@jonesday.com](mailto:lhesse@jonesday.com)  
+33.1.56.59.38.72



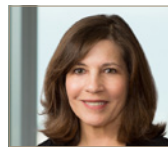
## KIMBERLY A. BROWN

Partner, Pittsburgh  
Business & Tort Litigation  
[kabrown@jonesday.com](mailto:kabrown@jonesday.com)  
+1.412.394.7995



## SHIREEN MATTHEWS

Partner, San Diego  
Investigations & White Collar Defense  
[shireenmatthews@jonesday.com](mailto:shireenmatthews@jonesday.com)  
+1.858.314.1184



## BARBARA GREGORATOS

Of Counsel, San Francisco  
Real Estate  
[bgregoratos@jonesday.com](mailto:bgregoratos@jonesday.com)  
+1.415.875.5830



## BING LIANG, PH.D.

Partner, Silicon Valley  
Intellectual Property  
[bliang@jonesday.com](mailto:bliang@jonesday.com)  
+1.650.687.4168



## JENNIFER C. EVERETT

Partner, Washington  
Cybersecurity, Privacy & Data Protection  
[jeverett@jonesday.com](mailto:jeverett@jonesday.com)  
+1.202.879.5494

## ONE FIRM WORLDWIDE®

AMSTERDAM  
ATLANTA  
BEIJING  
BOSTON  
BRISBANE  
BRUSSELS  
CHICAGO

CLEVELAND  
COLUMBUS  
DALLAS  
DETROIT  
DUBAI  
DÜSSELDORF  
FRANKFURT

HONG KONG  
HOUSTON  
IRVINE  
LONDON  
LOS ANGELES  
MADRID  
MELBOURNE

MEXICO CITY  
MIAMI  
MILAN  
MINNEAPOLIS  
MUNICH  
NEW YORK  
PARIS

PERTH  
PITTSBURGH  
SAN DIEGO  
SAN FRANCISCO  
SÃO PAULO  
SAUDI ARABIA  
SHANGHAI

SILICON VALLEY  
SINGAPORE  
SYDNEY  
TAIPEI  
TOKYO  
WASHINGTON